

exchanging
views

ArtBreaks06

Devon | Norfolk | Isle of Wight

Beaford Arts

Greenwarren House
Beaford
Winkleigh
Devon EX19 8LU

Tel: 01805 603201

www.beaford-arts.co.uk

Creative Arts East,

Griffin Court,
6 Market Street,
Wymondham,
Norfolk NR18 0GU.

Tel: 01953 713390

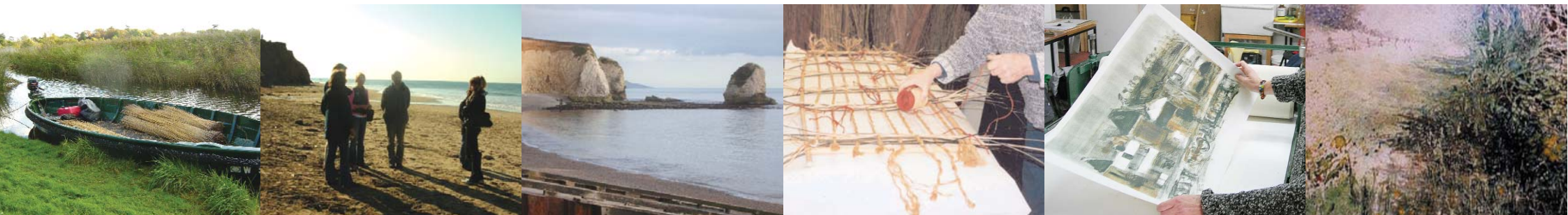
www.creativeartseast.co.uk

Quay Arts

Sea Street
Newport Harbour
Isle of Wight
PO30 5BD

Tel: 01983 822490

www.quayarts.org



Enjoying an Art Break

Exchanging Views Arts Breaks provide a rare opportunity to visit a lovely part of the English countryside and to learn from inspiring professional artists. You will benefit from:

- Working in a small group (8 – 12 people) with personal tuition and guidance from a experienced artist
- Spending two full days learning and developing new art and craft techniques
- Enjoying being in a specialist venue set in attractive rural surroundings
- Having free time to relax, unwind and explore the area
- Having access to advice and information about things to do and places to visit

The price quoted covers all tuition fees, use of equipment and materials. The cost of the Norfolk Art Breaks also includes tea, coffee and light lunches on both days. Accommodation is to be booked independently and where you chose to stay during your break is entirely up to you. Some of the course venues offer accommodation, and we have also included some other suggestions

Browse the following pages to find the course that suits you and then turn to the back page to request more information.

This brochure is available in large print format on request

ArtBreaks06

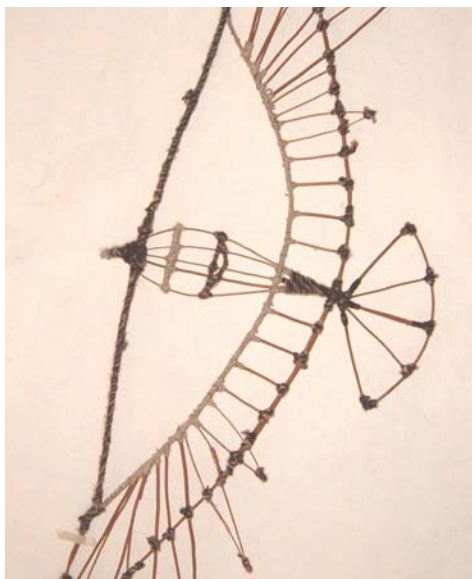
Exchanging Views is about taking a fresh look at landscapes and exploring new places through contemporary and traditional artforms.

Come and experience a wonderful weekend of culture and countryside by booking an Exchanging Views Art Break. Develop the artist in you whilst enjoying a relaxing weekend, meeting new people and being inspired by the breath-taking scenery. Take the opportunity to go off the beaten track and visit a Roman Villa on the Isle of Wight, an ancient red brick barn nestling in the Norfolk Broads or a unique arts centre in the North Devon countryside.

Art Breaks are being offered in Devon, Norfolk and the Isle of Wight between April 2006 and February 2007. There are twelve to choose from, giving you the opportunity to try your hand at something new or revisit an old passion. Choose from a variety of themes ranging from mosaic making to willow weaving, from drawing in charcoal to digital photography. All the courses are led by established professional artists who are also excellent teachers, and no previous experience is necessary in order to book a place.

Art Breaks have been organised by three leading arts organisations in Devon, Norfolk and the Isle of Wight. Each has considerable experience in working with artists and running courses in creative learning.

Devon Art Breaks	pages 4 and 5
Norfolk Art Breaks	pages 6 and 7
Isle of Wight Art Breaks	pages 8 and 9
Suggested Accommodation	page 10
Request more information	page 11



AB01
20/21 May 2006
10am – 4pm
Willow Sculpture led by
Carol Whibley
The Beaford Centre,
Greenwarren House, Beaford,
Winkleigh, Devon EX19 8LU

Willow is a wonderfully versatile and flexible natural material. It can be used in combination with other materials such as wire, paper, fabrics or wool to create screens, figurative sculptures or more abstract pieces. The course will be suitable for those who love to experiment and have fun. The only limit is the imagination.

Cost £75 pp for a two day course

See pages 10 and 11 for further information

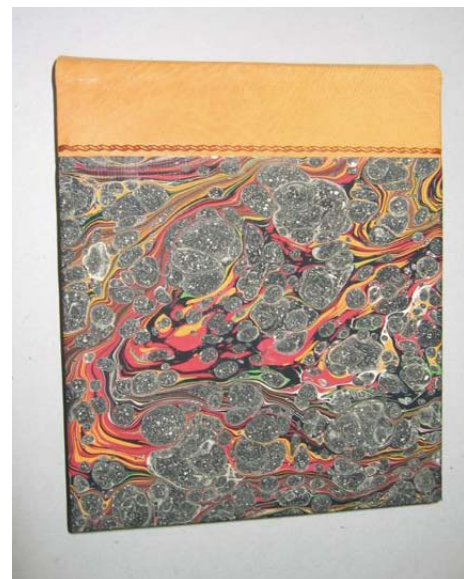


AB02
17/18 June 2006
10am – 4pm
Expressive Charcoal Drawing
led by Kate Lynch
The Beaford Centre,
Greenwarren House, Beaford,
Winkleigh, Devon EX19 8LU

An energetic weekend drawing with willow charcoal. It will start with abstract experimental mark-making and move into the landscape, making quick drawings to distil the geometry and rhythms, developing larger pieces of work though the weekend. Kate Lynch is a well-known artist who enjoys working vigorously with charcoal.

Cost £75 pp for a two day course

See pages 10 and 11 for further information



AB03
14/15 October 2006
10am – 4pm
Handmade Books led by Nina Inglis
The Beaford Centre,
Greenwarren House, Beaford,
Winkleigh, Devon EX19 8LU

Nina will teach the basics of folding, sewing and making a case for a handmade book or journal, and guide you through the various stages. She will show samples of other structures and if time allows, help you experiment and make one. This workshop would be suitable for anyone who loves using their hands and is considering getting their art work or writing into a creative bound format.

Cost £75 pp for a two day course

See pages 10 and 11 for further information



AB04
30 September - 01 October 2006
10am – 4pm
Watercolour Course led by
John Forward
The Beaford Centre,
Greenwarren House, Beaford,
Winkleigh, Devon EX19 8LU

John lives and works in North Devon, his work is inspired by the rich variety of landscape and seascapes in the area. The workshop will examine the natural landscape and look at the various techniques involved with getting a realistic effect using loose and textural techniques to depict the light and movement in a scene.

Cost £75 pp for a two day course

See pages 10 and 11 for further information



AB05
29/30 April 2006
10am – 4pm
Weaving with Willow led by
Maggie Campbell
Grove Farm, Repps with
Bastwick, Norfolk NR29 5JN

Your chance to work with Maggie Campbell, experienced sculptor, designer and environmental artist. Set in the beautiful surroundings of Grove Farm, surrounded by warm red brick and ancient woodland, you will learn a wide range of techniques using willow and natural materials found on site. This is your opportunity to create your own original mixed media pieces.

Cost £95 pp incl light lunches and refreshments

See pages 10 and 11 for further information



AB07
30 September - 01 October 2006
10am – 4pm
The Nature of Drawing led by
Katarzyna Coleman
St Lawrence Centre,
South Walsham NR13 6DQ

Another chance to discover the delights of drawing, or indulge an established passion, with artist Katarzyna Coleman. The course will feature a mix of approaches using a variety of drawing media and techniques. It will be held at the St Lawrence Centre, an ancient Norfolk church in the heart of the Broads, which has developed into a centre for the arts.

Cost £95 pp incl light lunches and refreshments

See pages 10 and 11 for further information



AB06
06/07 May 2006
10am – 4pm
The Nature of Drawing led by
Katarzyna Coleman
Raveningham Barn, Raveningham
Norfolk NR14 6NN

An opportunity to discover or develop your drawing skills and creativity. Led by Norfolk artist Katarzyna Coleman, you will have the chance to experiment with a variety of drawing media, techniques and approaches. The course will be held in the peace and tranquility of the ancient barn at Raveningham, surrounded by stunning landscape which will doubtless provide much inspiration.

Cost £95 pp incl light lunches and refreshments

See pages 10 and 11 for further information



AB08
24/26 October 2006
10am – 4pm
Print Making led by
Annette Rolston
Grove Farm, Repps with
Bastwick, Norfolk NR29 5JN

Explore mono-printing with professional printmaker, artist and teacher Annette Rolston in the tranquil environment of a thatched workshop at Grove Farm. Gardens planned with the artist in mind, wild flower meadows and the nearby Broads offer endless inspiration. Annette provides a mobile press and hand cut stencils of animals and flowers or geometric shapes.

Cost £95 pp incl light lunches and refreshments

See pages 10 and 11 for further information

Photo: Dave Loman



AB09

16/17 September 2006

10am – 4pm

Digital Landscape Photography
led by Dave Loman

**Dimbola Lodge Museum,
Terrace Lane, Freshwater Bay,
Isle of Wight PO40 9QE**



A digital photographic course at Dimbola Lodge, once home of Victorian photographer, Julia Margaret Cameron. Dave will present his own work and discuss specific compositional techniques to help you improve your landscape photography, inspired by field trips to Freshwater Bay and surrounding coastline. Please bring your own digital camera, although a limited number of cameras, sponsored by Olympus, are available.

Cost £75 pp for a two day course

See pages 10 and 11 for further information

Photo: Tim Johnson



AB10

14/15 October 2006

10am – 4pm

Basketmaking led by
Tim Johnson

**Ventnor Botanic Gardens,
Undercliff Drive, Ventnor,
Isle of Wight PO38 1UL**



This course, set in the Visitor's Centre of Ventnor's stunning Botanic Gardens, will introduce a variety of approaches to basket-making, both traditional and contemporary. Plaiting, braiding and twining will be explored with soft materials such as rush and iris, and there will be the opportunity to gather natural materials from the gardens and to experiment with sculptural forms.

Cost £75 pp for a two day course

See pages 10 and 11 for further information

AB11

04/05 November 2006

10am – 4pm

Mosaics led by
Helen Goodman

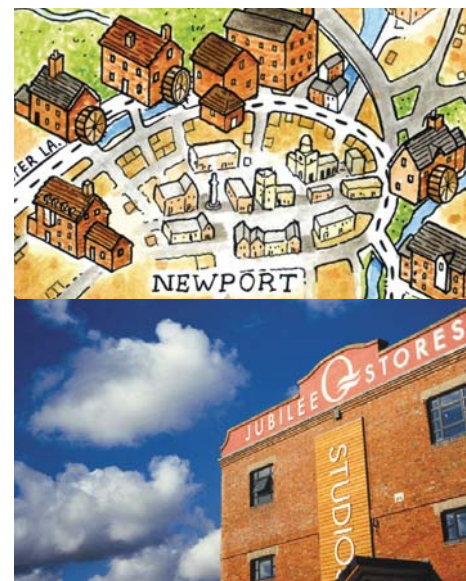
**Brading Roman Villa,
Morton Old Road, Brading,
Isle of Wight PO36 0EN**



Mosaic weekend workshop for beginners at Brading Roman Villa. You will have the opportunity to see the remarkable mosaic floors in the villa and to use traditional materials to make your own mosaics, inspired by photographs of the Island, Helen's many books and postcards or bring along your own designs.

Cost £85 pp for a two day course

See pages 10 and 11 for further information



AB12

24/25 February 2007

10am – 4pm

'Journey' led by Roger Butler

**Jubilee Stores, Newport Harbour,
Isle of Wight PO30 2ED**



Create a personal piece of art recording a short explorative meander around the area of Newport Harbour, using Quay Arts' Jubilee Studios as base. Make use of found materials, ideas, sketches etc, collected en route that can be assembled, collaged, composed and recorded to make a visual diary, image or map that records your personal journey.

Cost £85 pp for a two day course

See pages 10 and 11 for further information

How to book & places to stay

Devon Art Breaks

All four of the Devon Art Breaks **AB01** to **AB04** take place in the beautiful setting of Greenwarren House, an early 19th century gentleman's residence in the small north Devon village of Beaford, which also houses Beaford Arts. It was set up as the country's first rural arts centre in 1966.

Simple accommodation is available at Greenwarren House, or there is a range of other accommodation available locally.

For further details about the art breaks and information about accommodation, either at the Beaford Centre itself, or in the local area, please visit our website

www.beaford-arts.co.uk

Alternatively visit www.northdevon.com or www.discoverdevon.com to find somewhere to stay.

All workshops to be booked through Beaford Arts. Call **01805 603201**, email rescentre@beaford-arts.co.uk or post the enquiry form to request further information to: **Beaford Arts, Greenwarren House, Beaford, Winkleigh, Devon EX19 8LU**

Norfolk Art Breaks

Two of the Norfolk Art Breaks **AB05** and **AB08** are being held at Grove Farm, situated at Repps with Bastwick near Great Yarmouth. Grove Farm, which is a unique and tranquil venue for artists, set in the heart of Broadland, also offers bed and breakfast, and self-catering accommodation. For further information visit www.grovefarmholidays.co.uk or call **01692 670205**.

AB06 will take place in a fine renovated barn at Raveningham in South Norfolk and the nearest accommodation is at Maypole Barn B&B, Toft Monks. For further information visit www.maypolebarnbedandbreakfast.co.uk or call **01502 679905**.

AB07 will take place at St Lawrence Centre for the Arts in South Walsham, in the heart of the Norfolk Broads. The nearest accommodation is at Old Hall Farm, on the edge of the village. For further information visit www.OLDHALLFARM.co.uk or call **01603 270271**.

To locate a wide range of hotels, guest houses and B&Bs in Norfolk visit one of the following websites :

www.visitnorfolk.co.uk

www.norfolkbroads.com

www.visitnorwich.co.uk

All workshops to be booked through Creative Arts East. Call **01953 713390**, email artbreaks@creativeartseast.co.uk or post the enquiry form to request further information to:

Creative Arts East, Griffin Court, Market Street, Wymondham NR18 0GU

Isle of Wight Art Breaks

The Isle of Wight Breaks take place in four specialist venues around the Island.

For recommended accommodation and more details about the Art Breaks go to www.islecreate.co.uk

To find out about artistic activity visit www.isleofwight-arts.co.uk

For complete holidaying information on the Island call **01983 813800** or visit www.islandbreaks.co.uk

Digital Photography course **AB09** will take place in Dimbola Lodge museum in the beautiful surroundings of Freshwater Bay. The course costs include unlimited access to the museum www.dimbola.co.uk

Brading Roman Villa offers an unrivalled setting for a beginners mosaic course **AB11**. Here too the course cost includes unlimited access to the museum www.bradingleomanvilla.org.uk

Tim Johnson will help you draw inspiration from Ventnor's rich Botanic Gardens, **AB10** www.botanic.co.uk, whilst Jubilee Stores is the Island's premier dedicated workshop space situated at the heart of Newport Harbour **AB12** www.quayarts.org/jubilee.asp

All workshops to be booked through Quay Arts. Call **01983 822490**, email info@quayarts.org or post the enquiry form to request further information to: **Quay Arts, Sea Street, Newport Harbour, Isle of Wight PO30 5BD**

How to book & places to stay

ART BREAKS ENQUIRY FORM

You can book direct by e-mailing the relevant organisation for the Art Break you are interested in (see opposite page). If you do not have access to e-mail or would like to receive further information about the Art Break, or about accommodation available locally, **please complete the form below and post to the appropriate organisation opposite.**

Your Name

Postal address

Post code

e-mail address

Daytime telephone

Art Break which you want to receive further information about

Date & Code

Any other comments

Access requirements*

* All venues are wheelchair accessible. Please indicate if you have special access requirements or a disability that you would like us to be aware of.

An unrivalled choice
of holiday cottages...
...in Norfolk and North Suffolk



Norfolk Country Cottages, Carlton House, Market Place, Reepham, Norfolk, NR10 4JJ
Telephone: (01603) 871872 Fax: (01603) 870304
email: info@norfolkcottages.co.uk www.norfolkcottages.co.uk